



CORE Membership **Introduction**

The need to create and develop sustainable open scholarly infrastructures

Budapest Open Access Initiative (BOAI)

20th Anniversary in 2022



By “**open access**” to peer-reviewed research literature, we mean its free availability on the public internet, permitting any users to **read, download, copy, distribute, print, search, or link to the full texts of these articles, crawl them for indexing, pass them as data to software,** or use them for any other lawful purpose, without financial, legal, or technical barriers other than those inseparable from gaining access to the internet itself.

CORE's role in the OA repositories network

Confederation of Open Access Repositories

[COAR manifesto]



“Each individual repository is of limited value for research: **the real power of Open Access lies in the possibility of connecting and tying together repositories**, which is why we need interoperability. In order to create a seamless layer of content through connected repositories from around the world, Open Access relies on interoperability, the ability for systems to communicate with each other and pass information back and forth in a usable format. **Interoperability allows us to exploit today’s computational power so that we can aggregate, data mine, create new tools and services, and generate new knowledge from repository content.**”

Why is an indexing system for repositories needed?

An indexing system for repositories is needed to:

- facilitate efficient search,
- enhance discoverability,
- promote interoperability,
- support quality control of scholarly resources,
- support for research and education,
- increase knowledge exchange,
- support compliance and reporting.

Findability



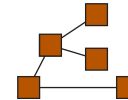
F

Accessibility



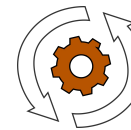
A

Interoperability



I

Reusability



R

What is CORE



CORE's mission is

to index all open access research worldwide and deliver unrestricted access for all.

We are here to support and advance the Open Access / Open Research movement.

WE ARE

a comprehensive **bibliographic database** of the world's scholarly literature.

WE

provide solutions for content management, **discovery** and scalable **machine access** to research.

WE ARE

a **not-for-profit** scholarly infrastructure dedicated to the open access mission, **adopters of POSI** principles.

WE

serve the global network of repositories and journals by **increasing discoverability** and **reuse** of open access content.

What problems does CORE solve?

- **Increase your contents' discoverability and prevent its misuse**
 - Support and assess Open Access compliance and FAIRness
 - Make your papers uniquely identifiable and resolvable with PIDs
 - Contributing to interoperability within the repositories network
 - Make your content machine readable

We achieve this by promoting your content to over **30 million monthly active users** of CORE. Your content will be discoverable not just in **CORE Search**, but also across the open access network, within the systems of hundreds of data providers using the **CORE Recommender** (such as arxiv.org) and **CORE Discovery plugins**.

What problems does CORE solve?

- Increase your contents' discoverability and prevent its misuse
- **Support and assess Open Access compliance and FAIRness**
- Make your papers uniquely identifiable and resolvable with PIDs
- Contributing to interoperability within the repositories network
- Make your content machine readable

In the context of rapidly increasing open access policies (such as **REF**, **UKRI** or **Plan S**) and best practices (such as **FAIR**), CORE can **improve** the understanding of your content's status and help you prepare **analytical reports for research administrators and funders.**

For example, CORE conducted the UK REF2021 open access audit, verifying when outputs became publicly available as open access.

What problems does CORE solve?

- Increase your contents' discoverability and prevent its misuse
- Support and assess Open Access compliance and FAIRness
- **Make your papers uniquely identifiable and resolvable with PIDs**
- Contributing to interoperability within the repositories network
- Make your content machine readable

Identifiers of metadata records indexed by CORE are automatically registered as **globally unique persistent identifiers (PIDs)**. For this purpose, CORE uses **OAI identifiers** that are viable PIDs for repositories, publishers and archives.

They can be, as opposed to DOIs, minted in a distributed fashion and cost-free, and are resolvable directly to the data provider rather than, as is typical with DOIs, to the publisher's website.

What problems does CORE solve?

- Increase your contents' discoverability and prevent its misuse
- Support and assess Open Access compliance and FAIRness
- Make your papers uniquely identifiable and resolvable with PIDs
- **Contributing to interoperability within the repositories network**
- Make your content machine readable

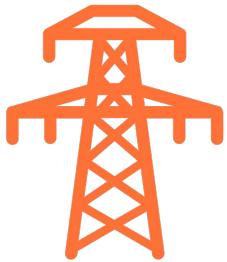
By being included in CORE, your infrastructure contributes to the national and international monitoring of open access content growth improve **metadata enrichments**, e.g. recommendations, **DOIs, ORCID iDs**, etc.

What problems does CORE solve?

- Increase your contents' discoverability and prevent its misuse
 - Support and assess Open Access compliance and FAIRness
 - Make your papers uniquely identifiable and resolvable with PIDs
 - Contributing to interoperability within the repositories network
- **Make your content machine readable**

CORE provides access to open access content in a machine readable format doing all the heavy lifting with the help of AI. This involves **harmonising metadata, cleaning and creating a structured representation** of scholarly data.

CORE - An adopter of POSI



The Principles
of Open
Scholarly
Infrastructure



CORE is a mission-driven not-for-profit endeavour and a signatory of the **Principles of Open Scholarly Infrastructure**.

CORE and The Principles of Open Scholarly Infrastructure

Sustainability

- Time-limited funds are used only for time-limited activities
- Goal to generate surplus
- Goal to create a contingency fund to support operations for 12 months
- Mission-consistent revenue generation
- Revenue based on services, not data

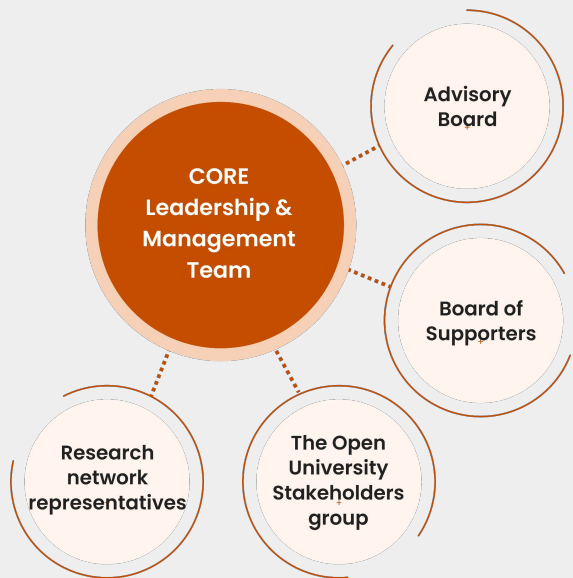
Governance

- Coverage across the research enterprise
- Stakeholder Governed
- Non-discriminatory membership
- Transparent operations
- Cannot lobby
- Living will

Insurance

- Open source
- Open data
- Available data
- Patent non-assertion

Community governance



Participation of members:

Advisory Board

- Advises on strategic directions
- Ensures mission alignment with the needs of the open research community

Board of Supporters

- Helping to identify requirements and prioritise the development roadmap
- Represents the interests of the global open repositories and journals network.

The Open University Stakeholder Group

- Assumes overall financial and legal responsibility for CORE's obligations.
- Provides institutional support and resources for CORE (e.g. HR, financial, legal, infrastructure).

Research network representatives

- Ensures relevance and provides guidance on effectively supporting the open research community.

CORE Leadership & Management Team

- Is responsible for the day to day operation of CORE.
- Takes operational decisions with guidance from the governance groups



CORE Members

Supporting and Sustaining

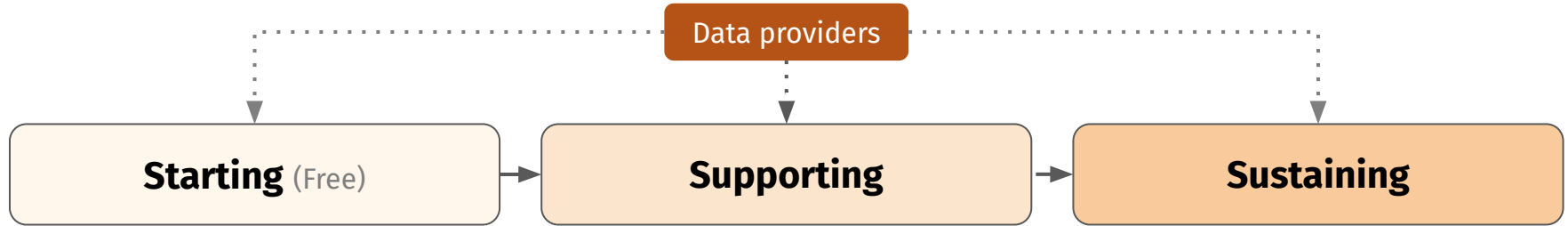


CORE Membership



- A network of data providers who are committed to the ongoing success of the **Open Access movement**
- We provide **tools and benefits** for our members
- All CORE data providers are eligible to become CORE Starting Members **free** of charge
- Supporting and Sustaining Members:
 - help shape our development roadmap
 - support and sustain CORE

Three levels of CORE Membership



Organisations who want to get their content indexed in CORE and benefit from increased discoverability (in search, [Recommender](#), [Discovery](#) and PMC) and persistent identification (via [OAI Resolver](#)), while staying in control of how their content is exposed using the [CORE Dashboard](#).

Organisations who want to be widely recognised for their open research. In addition to all the STARTING benefits, this membership also comes with extra visibility for your organisation in the OA network, additional technical support, [CORE API](#) access for your researchers, and a seat on our [Board of Supporters](#).

Organisations who are truly open research champions. In addition to all the SUPPORTING benefits, this membership comes with additional tools to help stay compliant with [OA policies](#) and FAIR, unlimited technical support, [CORE Dataset](#) access for your researchers for text and data mining, and two seats on our Board of Supporters

Starting

Free

- ✓ CORE Repository Dashboard
- ✓ Get your OAI identifiers resolved to your repository
- ✓ CORE Discovery
- ✓ CORE Search
- ✓ CORE Recommender
- ✓ General support
- ✓ Download statistics
- ✓ CORE Discovery Boost:
 - PubMed Central (PMC)
 - Recommended across the repositories network
- ✓ RIOXX metadata validator

Supporting

All Supporting benefits

PLUS

- ✓ Versions and duplicates detection
- ✓ Rights Retention Strategy (RRS) Identification
- ✓ API use for your university
- ✓ Technical support (≤ 5)
- ✓ Logos for your papers
- ✓ Logo banner
- ✓ Monitor RIOXX compliance
- ✓ Board of Supporters (1 vote)

Sustaining

All Supporting benefits

PLUS

- ✓ CORE OA Compliance dashboard
- ✓ Dataset use for your university
- ✓ Repository health check
- ✓ Unlimited and prioritised support
- ✓ Personalised banner
- ✓ Promoted / spotlight / featured articles
- ✓ Hosted or interview style blog post on mission-aligned activities
- ✓ Board of Supporters (2 votes)

How our members benefited from being part of this group

USE CASE



University of Chicago adopts CORE's article deduplication tool

"We do not have a duplicate check built into our repository, so CORE's duplicate check is immensely helpful. While other repositories might already have duplicate checks, I don't know about their usage of ML to find duplicates. Based on my experience, I would guess that it isn't as accurate if it relies primarily on exact matches. CORE's duplicate check displays the "confidence" it has that a record is duplicated in the repository, which is also helpful when determining the final decision on whether a duplicate record..."

Kirsten Vallee

Repository Services Manager at The University of Chicago

[READ BLOG POST](#)

How our members benefited from being part of this group

USE CASE



How the Oxford University Research Archive (ORA) uses the CORE API

“CORE harvests and aggregates information of research papers collected from institutional and subject repositories, and open access and hybrid journals, and makes the content available via an API. The CORE API offers a wealth of metadata and full text content from its many data providers. For ORA (Oxford University Research Archive), the use of the CORE API offers an opportunity to enhance workflows and streamline the process of reviewing and curating articles for inclusion in the repository...”

Jason Partridge

**Open Access Service Manager at the Bodleian Libraries,
University of Oxford.**

[READ BLOG POST](#)

How our members benefited from being part of this group

USE CASE



How the CORE Metadata Validator supports integration of Rioxx v3 in DSpace

“With the rollout of the Rioxx V3 metadata schema, repositories can benefit from far richer metadata for their articles. Since the release of the updated schema, The University of Cambridge has been working to develop an implementation of a RIOXX v3 for DSpace-based repositories which will greatly simplify the adoption of this metadata schema. The implementation process and verification of the metadata has been supported by the CORE Rioxx v3 validator available in the CORE Dashboard...”

Dr Agustina Martinez-Garcia

Open Research Systems Manager at University of Cambridge
and the Open Research Systems

[READ BLOG POST](#)

**By being a member, you contribute to help us
build a better, fairer, more equitable open
research ecosystem for everyone**

How to become a member?

Subscribe on the website

<https://core.ac.uk/membership>

Send us an email to

membership@core.ac.uk

UK HEIs subscribe in Jisc LSM

<https://subscriptionsmanager.jisc.ac.uk/#>



CORE Membership

Join the COnnecting REpositories community and build open infrastructure for repositories together